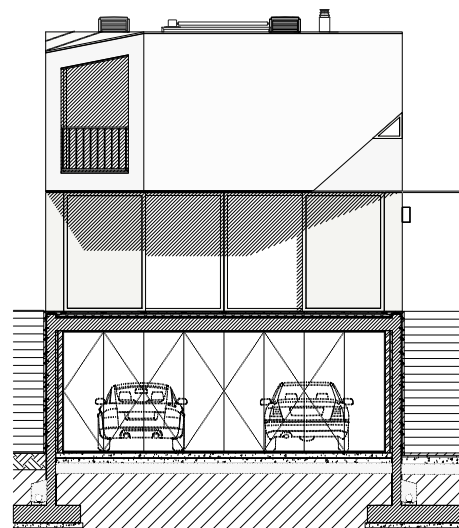
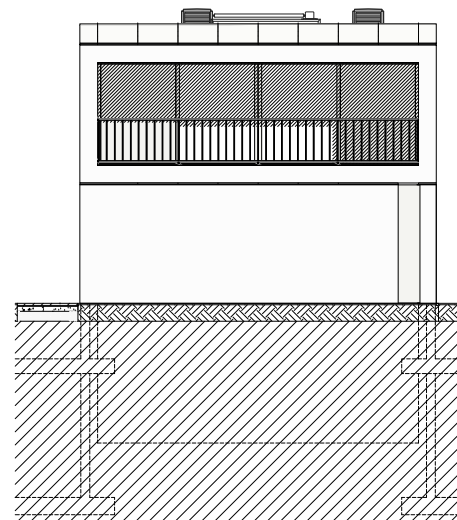


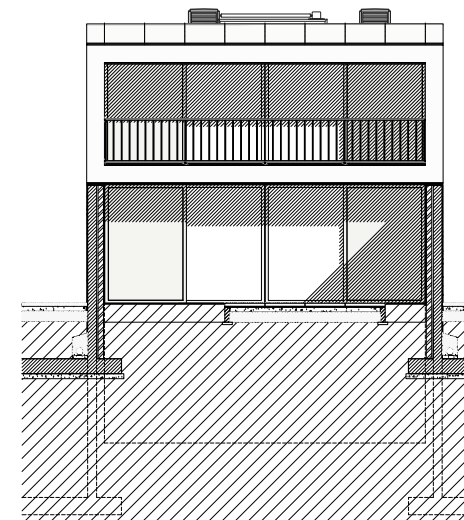
ALÇADO NORTE



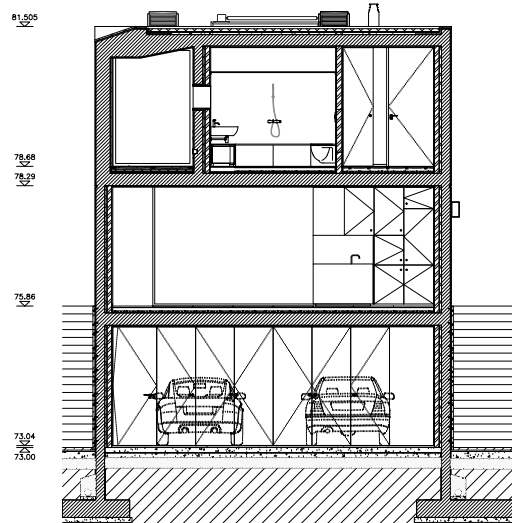
CORTE I



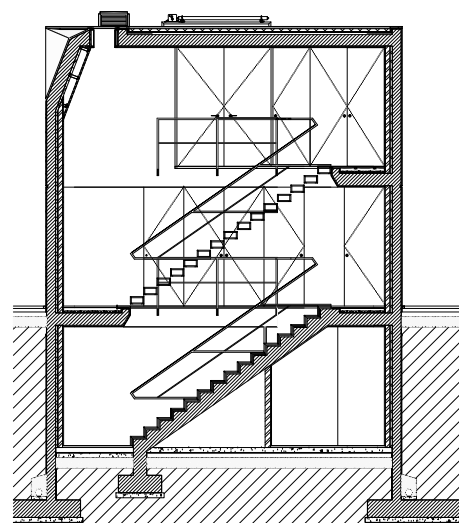
ALÇADO SUL



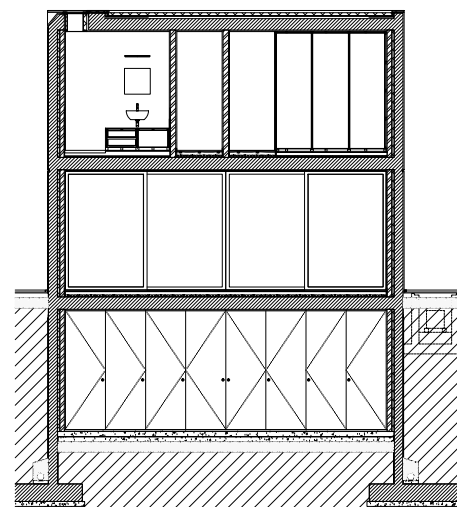
ALÇADO SUL



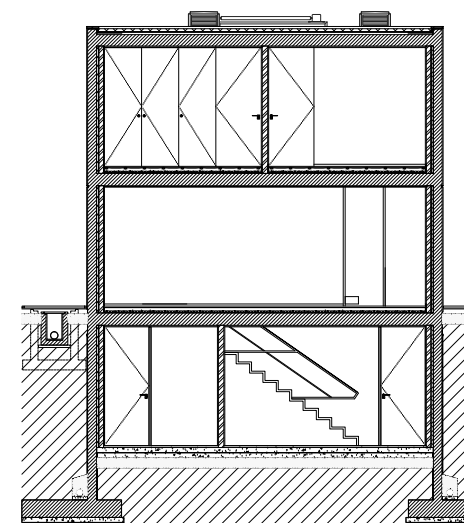
CORTE C



CORTE D



CORTE E



CORTE F

LOTEAMENTO DA RUA DA CORGA / ÁGUAS SANTAS  
HABITAÇÃO UNIFAMILIAR  
LÚCIO DA SILVA AZEVEDO & FILHOS, S.A.  
JOÃO ALVARO ROCHA - ARQUITECTOS, S.A.  
RUA PROF. CAROLINA DE FREITAS SOARES CARVALHO, 32, 4470-160 MIA - PORTUGAL  
TEL. +351 22 947 17 56/59 FAX. +351 22 947 17 97



05

TELAS FINAIS - LOTE 09  
ALÇADOS E CORTES TRANSVERSAIS

ESCALA 1/50  
0 0.5 1.0  
MAIO 2010